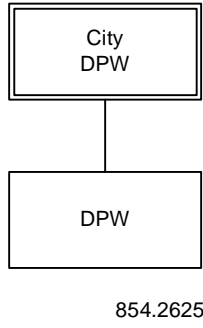


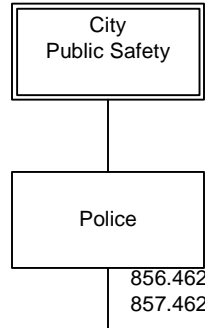
Marlborough Emergency Operations Center (EOC)

Primary EOC - Central Fire Station

Secondary EOC - Police Headquarters

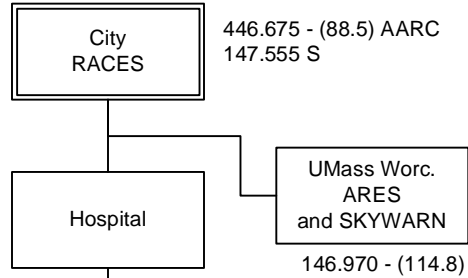


854.2625



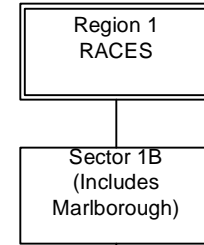
856.4625
857.4625

858.4625
854.3875
46.42
EMA – 151.115

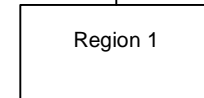


446.675 - (88.5) AARC
147.555 S

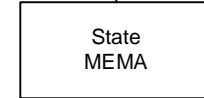
146.970 - (114.8)



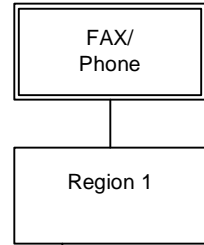
146.640 – (136.5)
146.520 S
145.750 S WINLINK



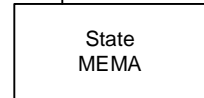
53.690 S
145.01 S WINLINK



53.310 - (71.9)
3943 KHz
7245 KHz



Main 978-328-1500



Main 508-820-2000
FAX 508-875-2517

Marlborough Hospital Frequencies

Facilities/Security 464.475 +5 MHz (162.2)
Hospital/Amb 468.000 -5 MHz
HEAR 155.340

Hudson - Sector 1C

146.955 - (74.4) 147.645 S

Northboro/Westboro/Southboro – Region 4 / S. Worcester County

146.97 – (114.8)

Berlin – Region 4 / N. Worcester County

145.37– (136.5)

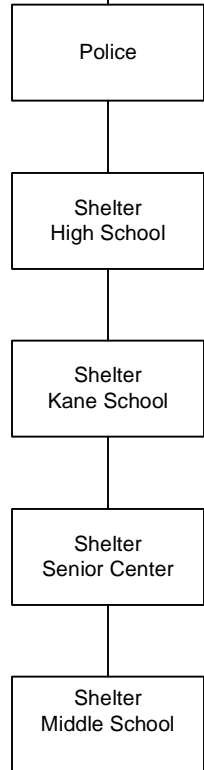
Sudbury and Framingham are Sector 1B

Stow – W Middlesex ARES

147.435 S (110.9)

Region 3 - 155.745

NOAA Weather - 162.550



Ham Repeaters

446.675 - (88.5) AARC - Primary Use
(also use Simplex on 446.675)

147.240 + (71.9) Secondary (KV1J)
147.270 + (146.2) Marlborough (MMRA)
449.925 - (88.5) Marlborough (MMRA)
146.640 – (136.5) Waltham (1B)
145.230 - (88.5) Boston (Salvation Army)
146.925 - (100.0) Worcester (Skywarn)
146.970 - (114.8) Paxton (Skywarn)
146.955 - (74.4) Westford (1C)

MEMA High Band Radio System – Region 1
150 MHz band – Channelized on MEMA supplied Motorola radio.
Primary is the 800 MHz system “MEMA An – MEMA EAST”

<http://ares.ema.arrl.org>

2 Jan 2023 Eric Williams KV1J